



# FOR LEASE

Retail / Available Land

5,000+ SF restaurant building in close proximity to business districts available for immediate lease.

## Address

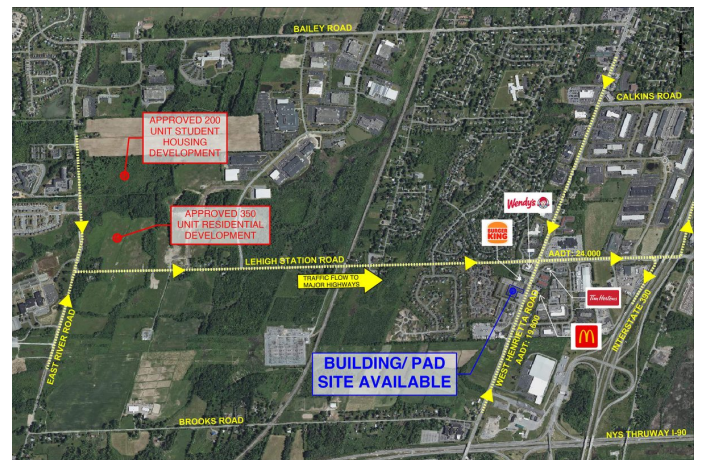
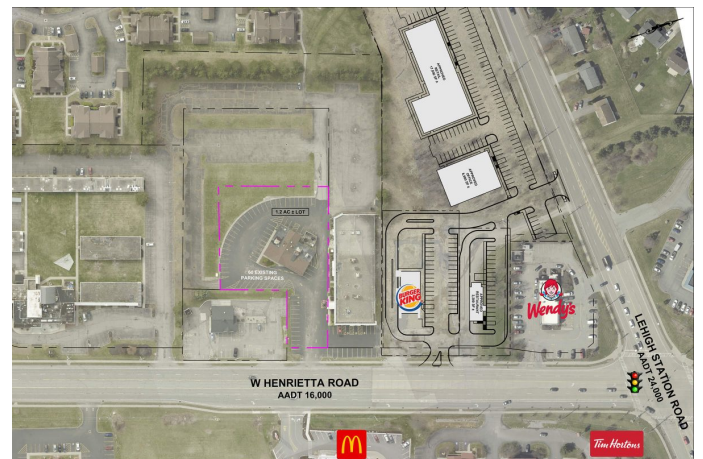
4835 W Henrietta Rd  
Henrietta, NY 14467

## General Information

Building Size: 5,151 SF  
Space Available: 5,151 SF  
Lot Size: 1.20 AC  
Zoning: Commercial B1

## Property Highlights

- Close proximity to business districts, residential areas, I-390, I-90
- Remodel, demo, and build-to-suit options available
- 171 person occupancy
- 70 dedicated parking spaces & shared parking lots available
- Pylon sign available on West Henrietta Road
- Building mechanicals in good working condition



## CONTACT:



Chris Schaeffer  
(585) 353-3690  
cschaeffer@donohoemgmt.com

