



## FOR LEASE

## Industrial / Warehouse

This 111,500 SF warehouse/distribution building is available for lease, offering 24-foot clear height ceilings, 32' x 45' column spacing, and a fully sprinkled interior with hanging air rotation units. It features 21 loading docks, 16 with levelers, and includes 15,300 SF of office space with a kitchenette, RTUs, and modern utilities. Equipped with 3-Phase, 300 KVA power. The facility is just 1.2 miles from Route 390 and 4 miles from NYS I-90, ensuring excellent connectivity for warehousing or logistics needs.

### Address

200 Mushroom Blvd  
Rochester, NY 14623

### General Information

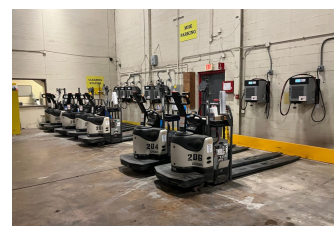
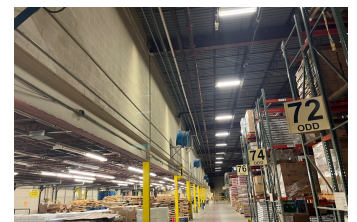
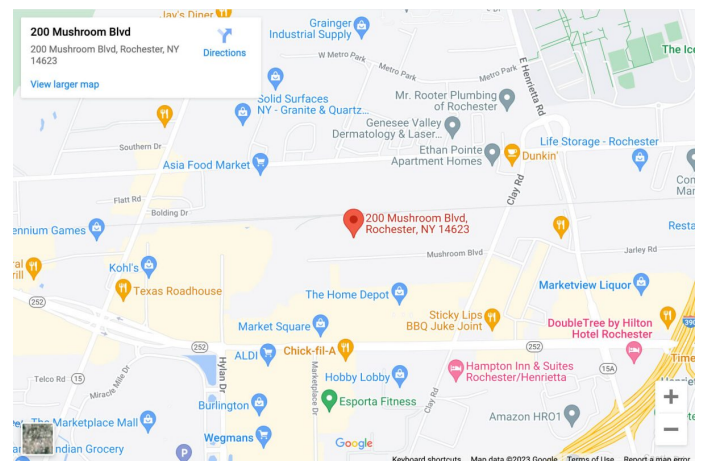
Building Size: 111,500 SF  
Lot Size: 4.94 AC  
Zoning: Industrial

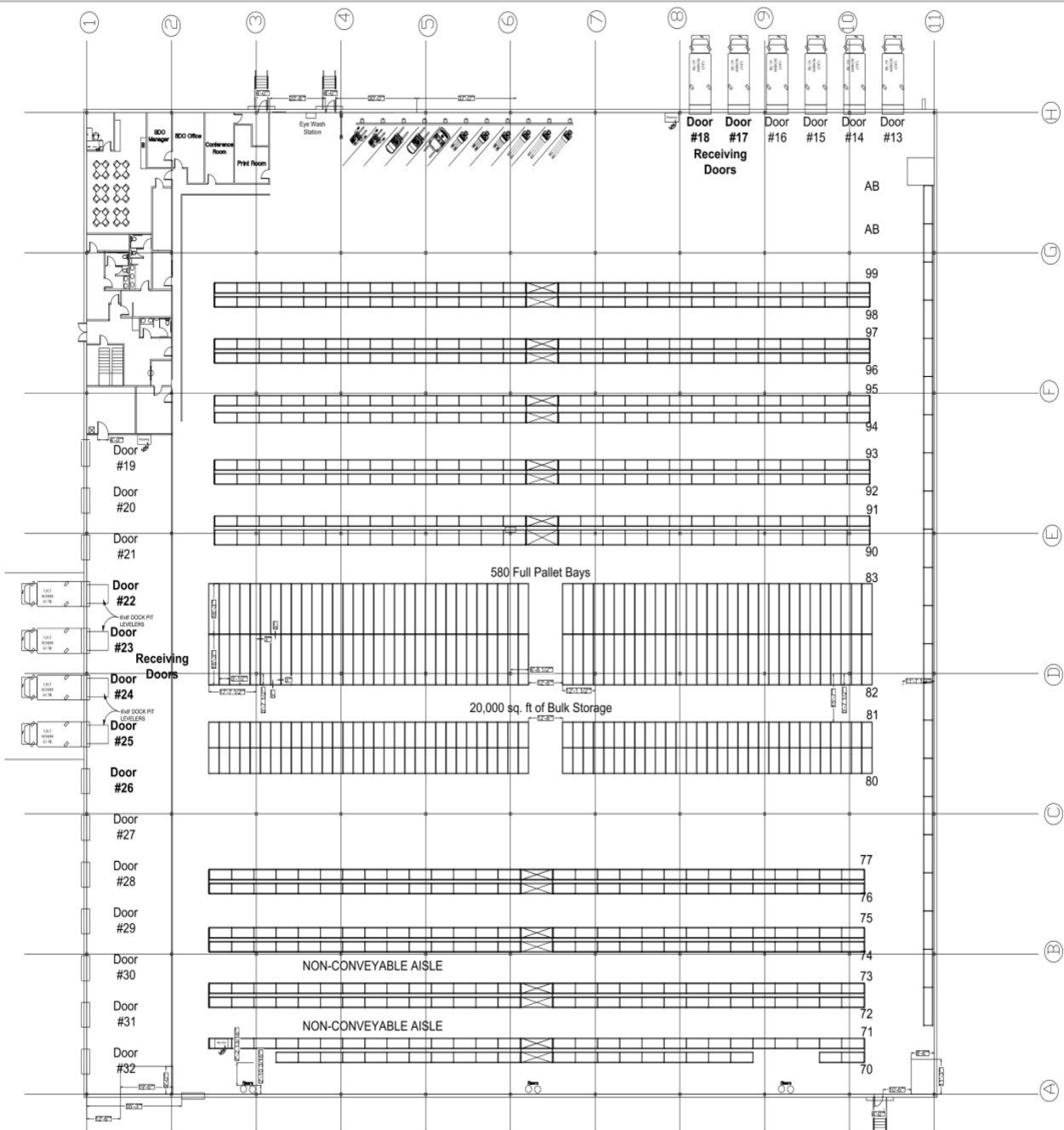
### Property Highlights

- 24' clear ceiling in warehouse
- 21 Loading docks with concrete aprons
- 32'x45' column spacing
- 3Phase 300KVA Electric Service
- First floor warehouse 96,200 sf
- First floor offices / lobby / restrooms 4,300 sf
- Second floor office 11,000 sf

### CONTACT:

Chris Schaeffer  
(585) 353-3690  
cschaeffer@donohomgmt.com





Date: 7/23/2012 By: RC Revision: 0		Title: OVERVIEW PLAN - Annex Layout Location: 200 MUSHROOM BLVD ROCKSTER, FC Project: STAPLES Project: Facilities & Equipment Design	
Description:		Revisions:	
The drawing is the property of STAPLES and is not to be reproduced or transmitted in any form or by any means, electronic, mechanical, photocopying, recording, or by any information storage and retrieval system, without prior written permission from STAPLES. LIST USE ONLY.		Date: By:	