



FOR LEASE

Industrial / Warehouse / Lab / Office / Available Land

This 12,600 SF office/lab space is available for immediate occupancy in a prime location with great accessibility. Situated with immediate access to I-390 and multiple entry points from W Henrietta Road, Jefferson Road, and Clay Road, this property offers superior convenience for employees, clients, and business operations. See our 1777 E Henrietta Rd Annex (28,500 sf) listing for additional space located at this property!

Address

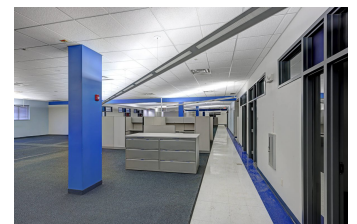
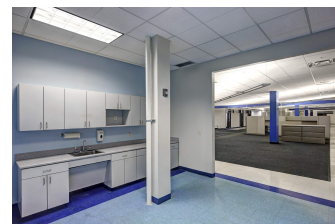
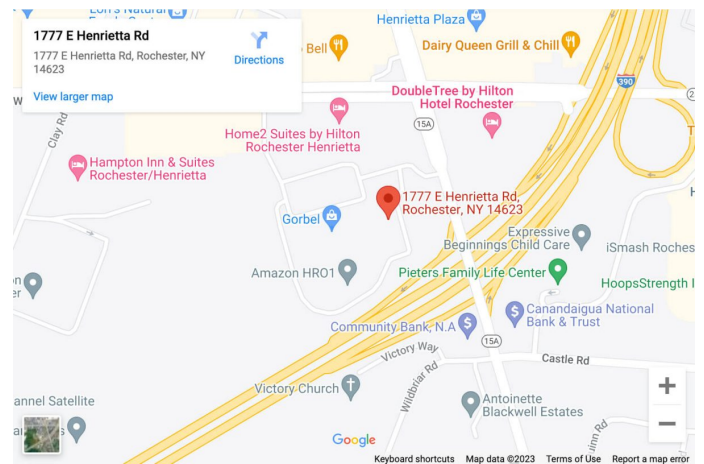
1777 E Henrietta Rd
Rochester, NY 14623

General Information

Building Size: 287,356 SF
Space Available: 3,000 - 28,500 SF
Lot Size: 34.90 AC
Zoning: IG General Industrial

Property Highlights

- Easy access to I-390, I-490, and I-90
- Parking for 500+ vehicles
- Will demise spaces as needed
- Additional 8,000 sf, 3,700 sf, 5,100 sf office, can combine spaces



CONTACT:

Chris Schaeffer
(585) 353-3690
cschaeffer@donohomgmt.com



