



## FOR LEASE

Office

30,000 SF office building available for immediate occupancy. Main reception area with grand entrance, open workspace areas, conference rooms, hard walled offices, executive wing, elevator. Space can be demised into 15,000 sf spaces.

### Address

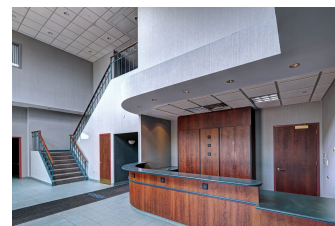
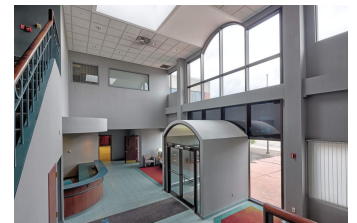
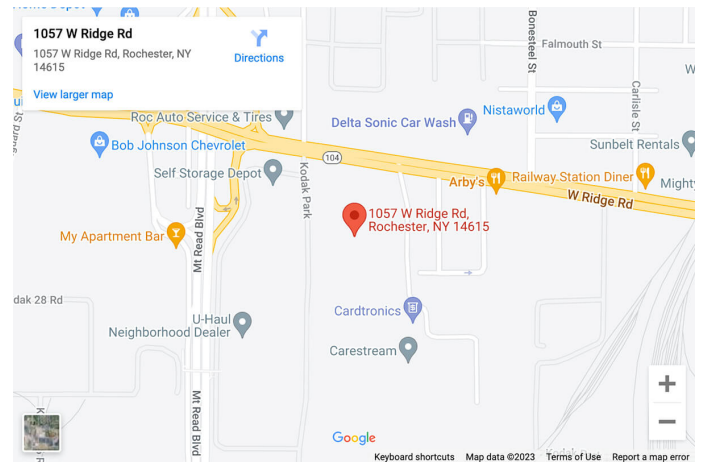
1057 W Ridge Rd  
Rochester, NY 14615

### General Information

Building Size: 30,000 SF  
Space Available: 15,000 - 30,000 SF  
Zoning: M-1 Industrial

### Property Highlights

- High visibility on W Ridge Rd (35,600 AADT)
- 0.2 miles from Mt Read Blvd, 1 mile from 490
- Signalized entrance
- Ample parking
- Located on bus route



### CONTACT:

Chris Schaeffer  
(585) 353-3690  
cschaeffer@donohomgmt.com

