



## FOR LEASE

Industrial / Warehouse / Available Land

Industrial zoned property available totaling 15.75 acres. Site has been cleared, grubbed, and rough graded for development. Sanitary, water, gas, electric utilities all currently exist on RHTL Rd to service the lot. High visibility from NYS Interstate 390. Site is 1 mile from the 390 on-ramp and an additional 3 miles to I-90.

### Address

1000 Rush Henrietta Townline Road  
West Henrietta, NY 14586

### General Information

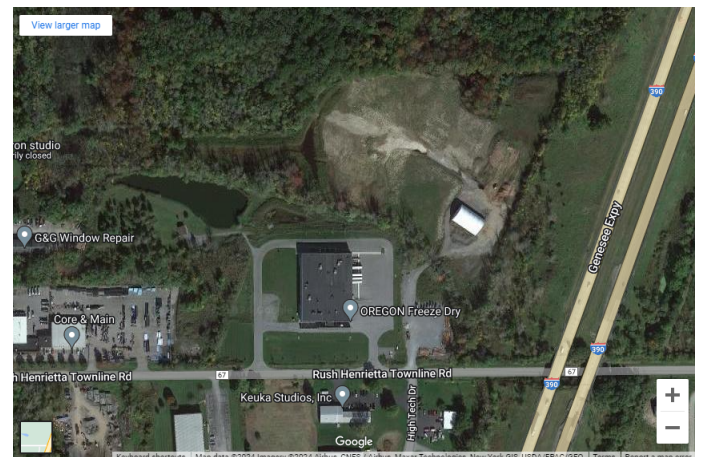
Building Size: Up to 184,000 sf +/-

Lot Size: 15.75 acres

Zoning: Industrial

### Property Highlights

- 1 mile from I-390, additional 3 miles to I-90
- Rough graded site
- Utilities readily available for connection
- High visibility from I-390 (80,000 AADT)



### CONTACT:

Chris Schaeffer  
(585) 353-3690  
cschaeffer@donohomgmt.com

